

CONTOUR

GLAZED CERAMIC | WALL TILES

PLAIN COLOUR TILES

ABSOLUTE



JOHNSON • TILES
Since 1901



www.johnson-tiles.com

CONTOUR

Contour features transitional and full strip options which explore three-dimensional structuring. The transitional pieces provide a smooth flow from the field tiles into the full contoured piece to create a sense of movement and fluidity. With vivid colour options including Garnet, Teal, and Black Stone, Contour is sure to make an impact in any interior.

Front Cover Image: Cotto Matt 300x75mm - CNT07A, White 3D Transition Matt 300x75mm - CNT02T & White 3D Strips Matt 300x75mm - CNT02D





Roomset Photography



Cotto 3D Strips Matt 300x75mm - CNT07D



Black Stone 3D Strips Matt 300x75mm - CNT12D



Teal Matt 300x75mm - CNT05A
Teal 3D Transition Matt 300x75mm - CNT05T
Teal 3D Strips Matt 300x75mm - CNT05D

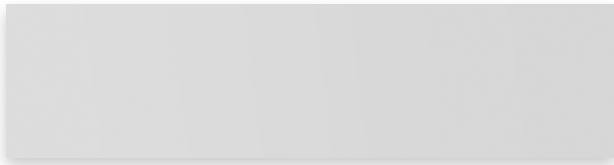


White Stone 3D Strips Matt 300x75mm - CNT10D



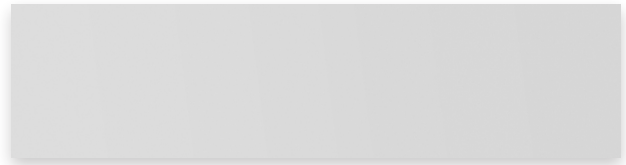
Colours & Product Codes

V1: Low Shade Variation



WHITE

G CNT01A **LRV: 90**



WHITE

M CNT02A **LRV: 90**



WHITE 3D TRANSITION

G CNT01T **LRV: 90**



WHITE 3D TRANSITION

M CNT02T **LRV: 90**



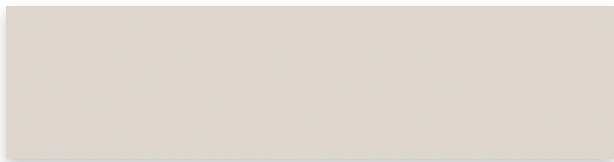
WHITE 3D STRIPS

G CNT01D **LRV: 90**



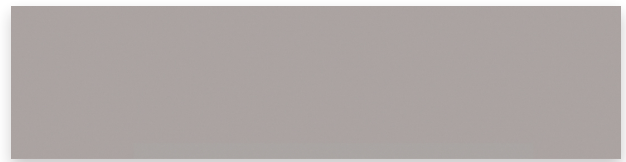
WHITE 3D STRIPS

M CNT02D **LRV: 90**



BEIGE

M CNT03A **LRV: 62**



GREY

M CNT04A **LRV: 29**



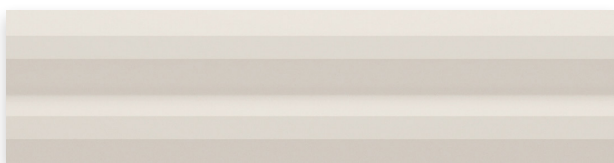
BEIGE 3D TRANSITION

M CNT03T **LRV: 62**



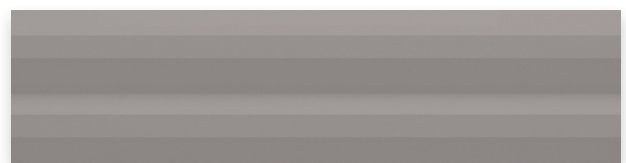
GREY 3D TRANSITION

M CNT04T **LRV: 29**



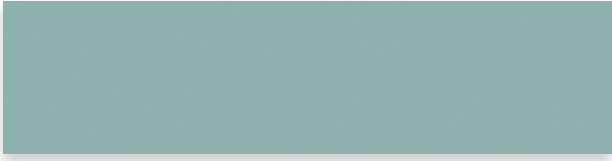
BEIGE 3D STRIPS

M CNT03D **LRV: 62**

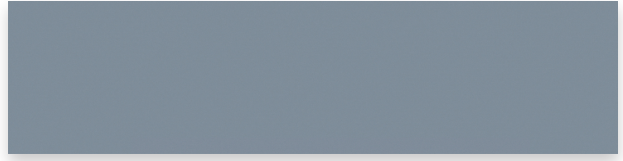


GREY 3D STRIPS

M CNT04D **LRV: 29**



TEAL
[M] CNT05A LRV: 35



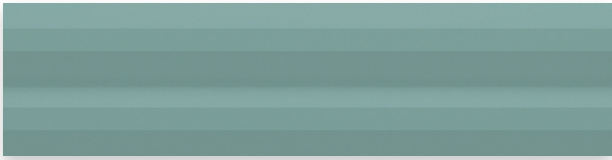
SKY
[M] CNT06A LRV: 29



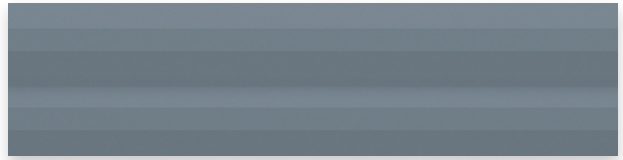
TEAL 3D TRANSITION
[M] CNT05T LRV: 35



SKY 3D TRANSITION
[M] CNT06T LRV: 29



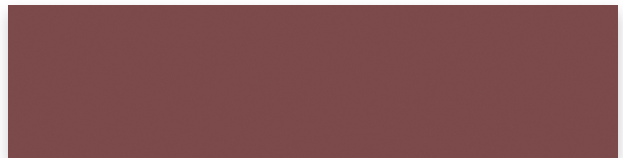
TEAL 3D STRIPS
[M] CNT05D LRV: 35



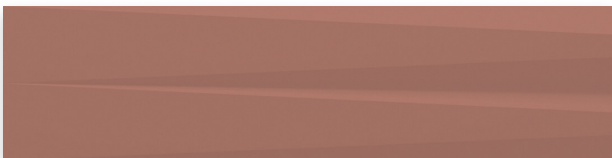
SKY 3D STRIPS
[M] CNT06D LRV: 29



COTTO
[M] CNT07A LRV: 28



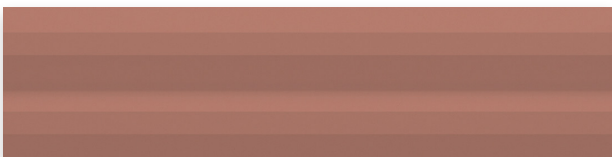
GARNET
[M] CNT08A LRV: 11



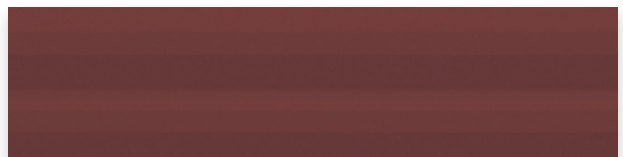
COTTO 3D TRANSITION
[M] CNT07T LRV: 28



GARNET 3D TRANSITION
[M] CNT08T LRV: 11



COTTO 3D STRIPS
[M] CNT07D LRV: 28



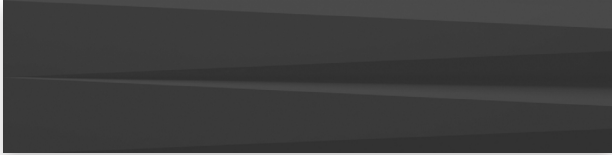
GARNET 3D STRIPS
[M] CNT08D LRV: 11



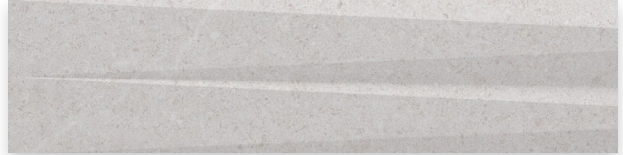
BLACK
M CNT09A LRV: 09



WHITE STONE
M CNT10A LRV: 73



BLACK 3D TRANSITION
M CNT09T LRV: 09



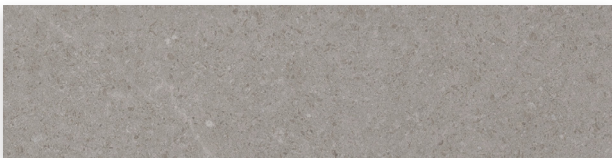
WHITE STONE 3D TRANSITION
M CNT10T LRV: 73



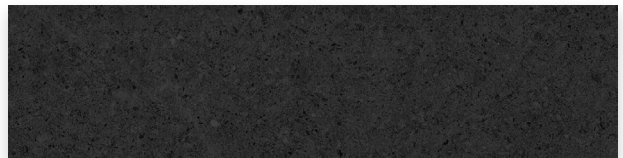
BLACK 3D STRIPS
M CNT09D LRV: 09



WHITE STONE 3D STRIPS
M CNT10D LRV: 73



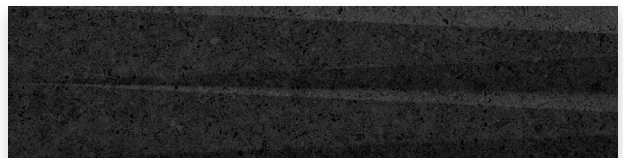
GREY STONE
M CNT11A LRV: 42



BLACK STONE
M CNT12A LRV: 15



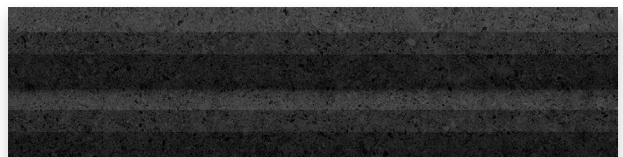
GREY STONE 3D TRANSITION
M CNT11T LRV: 42



BLACK STONE 3D TRANSITION
M CNT12T LRV: 15



GREY STONE 3D STRIPS
M CNT11D LRV: 42



BLACK STONE 3D STRIPS
M CNT12D LRV: 15



Sizes, Finishes & Availability



| # | Size | Finish | Colour Availability | Thickness | Pieces/Box | Coverage/Box | Weight/Box |
|---|---------------------------|--------|---------------------|--------------|------------|---------------------|------------|
| 1 | 300x75mm | Gloss | White Only | 8mm | 23 Tiles | 0.52 m ² | 7.52 kg |
| | | Matt | All Colours Shown | 8mm | 23 Tiles | 0.52 m ² | 7.52 kg |
| 2 | 300x75mm 3D Transition | Gloss | White Only | 8mm - 15.5mm | 18 Tiles | 0.41 m ² | 6.91 kg |
| | | Matt | All Colours Shown | 8mm - 15.5mm | 18 Tiles | 0.41 m ² | 6.91 kg |
| 3 | 300x75mm 3D Strips | Gloss | White Only | 15.5mm | 13 Tiles | 0.30 m ² | 5.51 kg |
| | | Matt | All Colours Shown | 15.5mm | 13 Tiles | 0.30 m ² | 5.51 kg |

Note: All sizes indicated are metric modular. All dimensions are in millimetres. All sizes shown are nominal. For the most up-to-date availability information, please visit our website. ALL LRV results are from Johnson Tiles' internal test reports and are to be used for guidance only. LRV: Light Reflectance Value.



Black Stone 3D Strips Matt 300x75mm - CNT12D



Technical Data

Specification

| Range | Size | Wall Suitability | Floor Suitability | Wet Barefoot | CSV | Material |
|---------|-----------------|------------------|-------------------|--------------|-----|-----------------------|
| Contour | All Sizes Shown | Internal Only | - | - | VI | Glazed Ceramic [BIII] |

Physical Properties

| Test/Standard | Requirement | Test Result | Test/Standard | Requirement | Test Result |
|---|-----------------------------------|----------------------------------|---|----------------------------|------------------------------|
| Length / Width EN ISO 10545 - 2 | $\pm 0.5\% \leq \pm 2\text{mm}$ | Pass | Modulus of Rupture EN ISO 10545 - 4 | Min. 15N / mm ² | Pass |
| Thickness EN ISO 10545 - 2 | $\pm 10\% \leq \pm 0.5\text{mm}$ | Pass | Thermal Shock EN ISO 10545 - 9 | Pass | Pass |
| Straightness of Side EN ISO 10545 - 2 | $\pm 0.3\% \leq \pm 1.5\text{mm}$ | Pass | Frost Resistance EN ISO 10545 - 12 | - | Not Suitable |
| Rectangularity EN ISO 10545 - 2 | $\pm 0.5\% \leq \pm 2\text{mm}$ | Pass | Chemical Resistance EN ISO 10545 - 13 | Min. Class B | Class A |
| Surface Flatness EN ISO 10545 - 2 | $\pm 0.5\% \leq \pm 2\text{mm}$ | Pass | Stain Resistance EN ISO 10545 - 14 | Min. Class 3 | Class 5 |
| Water Absorption EN ISO 10545 - 3 | 10% to 20% | $\geq 10\%$ | Fire Rating | - | Class A I Non Combustible |
| Weight / M² | 14.54 kg 8mm Thick | 17.07 kg 3D Transition | 18.85 kg 3D Strips | | |

Note: All products are classed as BIII - Glazed Ceramic. All products conform to BS EN 14411.

Important Information

During the manufacturing process of ceramic, vitrified and porcelain tiles, some variation in shade and pattern can occur. Before fixing any tiles; several boxes should be opened and their contents mixed to ensure that size, colour, shade and patterning are acceptable. The tiles shown are quality products and conform to the physical properties listed below.

- All sizes shown are metric modular.
- For specific suitability and fit-for-purpose details please contact our technical helpline.
- Johnson Tiles cannot accept responsibility for any tiles that have been fixed.
- Every effort has been made to ensure the accuracy of the information given.
- Johnson Tiles reserves the right to change specifications and availability without prior notice.
- Nothing in these statements does or will affect the statutory rights of the consumer.

© Johnson Tiles, Johnson, Absolute and Material Lab are registered trademarks and together with Kerastar and product names are the trademarks of H&R Johnson Tiles Limited and licensed to Norcros Group (Holdings) Limited trading as Johnson Tiles. © 2021 Johnson Tiles. All rights reserved.



For more information about Contour or
any of our other product ranges simply visit
www.johnson-tiles.com |      

Where To Find Us

Johnson Tiles

Harewood Street,
Tunstall,
Stoke on Trent,
Staffordshire,
ST6 5JZ

Tel: +44 (0)1782 575 575
Fax: +44 (0)1782 577 377
Email: info@johnson-tiles.com

Samples Enquiries

Tel: +44 (0)1782 524 043
Fax: +44 (0)1782 577 379
Email: samples@johnson-tiles.com

Technical Helpline

Tel: +44 (0)1782 524 111
Fax: +44 (0)1782 577 379
Email: techadvice@johnson-tiles.com

JOHNSON • TILES
Since 1901